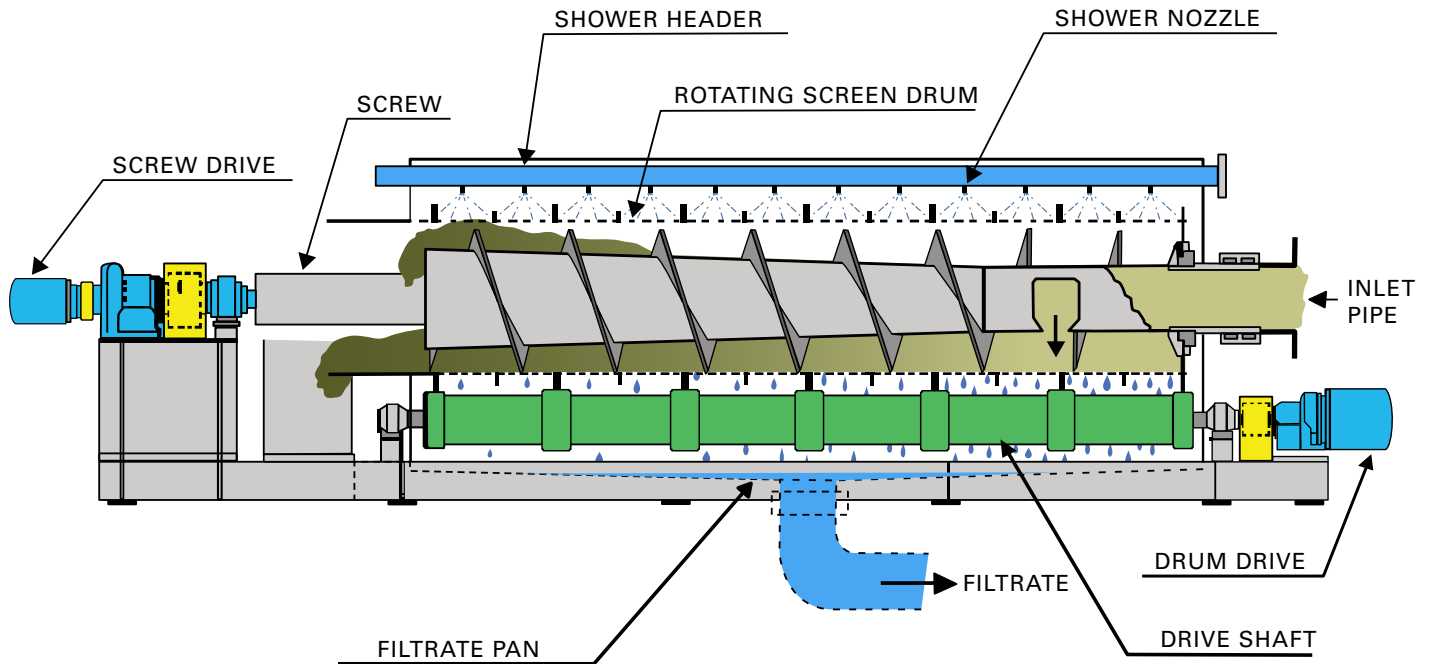


# HIGH CONSISTENCY ROTARY SCREEN THICKENER (HC-RST)



## APPLICATIONS

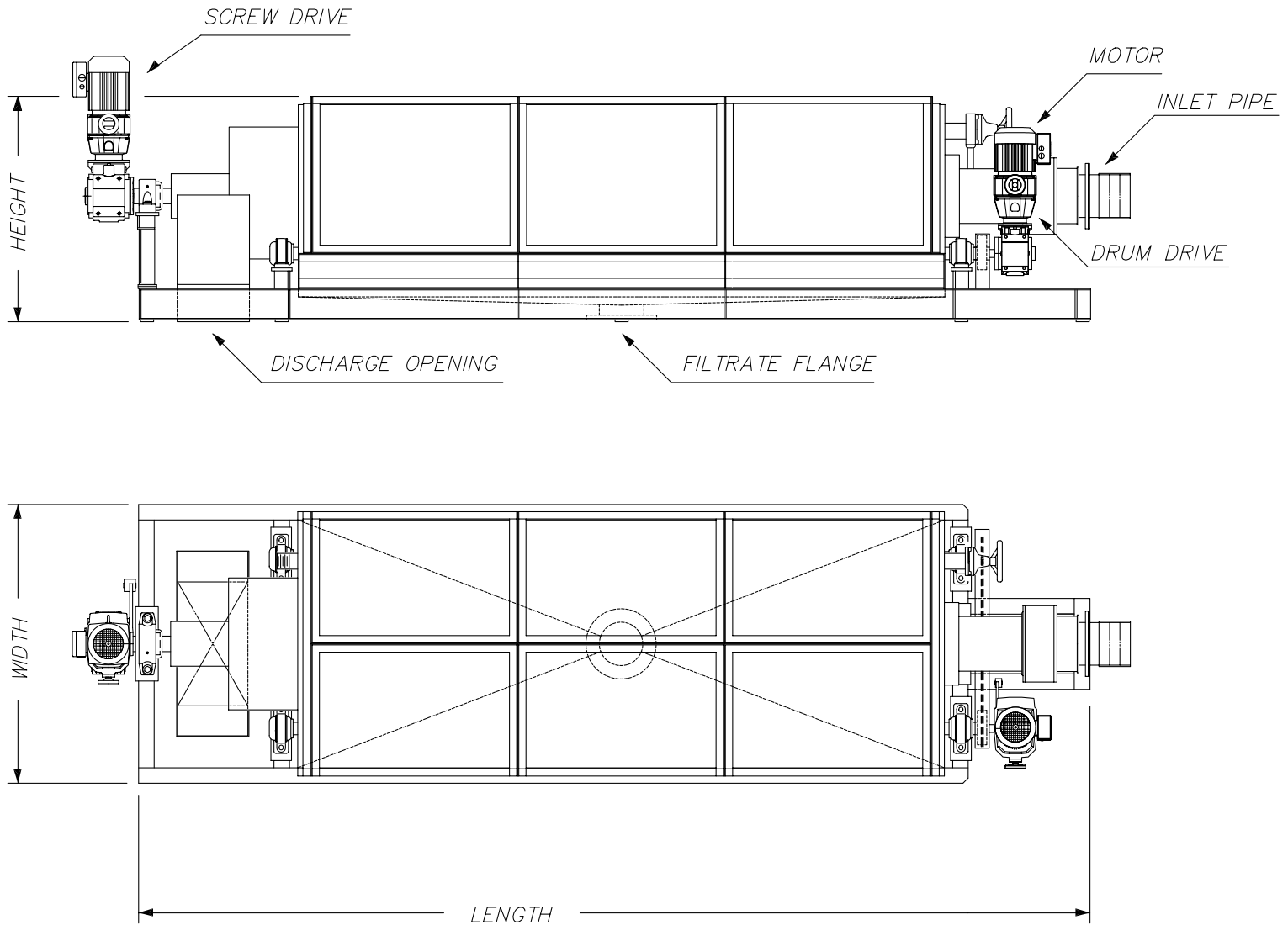
- Prethickening prior to a screw press
- Thickening prior to an aerobic or anaerobic digester
- Thickening for reduced volume for transport
- Screening / Thickening of solids from a liquid/solids stream

## FEATURES

- Increased Outlet Consistency & Capacity
- Independently Driven Counter Rotating Screw
- Stainless Steel Wetted parts
- Heavy Duty Construction
- Can Accept Inlet Consistencies <1%
- Outlet Consistency Typically Ranges 8–20%
- Patented Design
- Reduced Polymer Dosage
- Spray Shower Keep Screens Clean
- Multiple Sizes for Any Flow Rate
- Easy to Install and Operate
- Over 150 units in Operation



# HC-RST plan and elevation view drawing



## High Consistency Rotary Screen Thickeners

| Model No.        | Motor HP | Length | Height | Width | Weight     | Shower gpm | Max. flow (gpm) |
|------------------|----------|--------|--------|-------|------------|------------|-----------------|
| RST-HCS630x3000L | 2 & 3    | 200"   | 43"    | 53"   | 7,000 lb.  | 15-20      | 300-350         |
| RST-HCS775x3600L | 3 & 5    | 235"   | 50"    | 58"   | 8,250 lb.  | 15-20      | 400-450         |
| RST-HCW630x3000L | 3 & 5    | 200"   | 43"    | 87"   | 9,700 lb.  | 30-40      | 600-700         |
| RST-HCW775x3600L | 5 & 10   | 235"   | 51"    | 93"   | 11,700 lb. | 30-40      | 800-900         |

RST = rotary screen thickener

HC = high consistency model

S = single drum model

W = double drum model

First number = drum diameter in millimeters

Second number = drum length in millimeters

Shower water pressure = 30–40 psi recommended

Maximum flow rate capability varies depending on the specifics of a given application.



FKC Co., Ltd.  
 2708 W. 18th Street  
 Port Angeles, WA 98363  
 (360) 452-9472  
[www.fkcscrewpress.com](http://www.fkcscrewpress.com)  
[mail@fkcscrewpress.com](mailto:mail@fkcscrewpress.com)